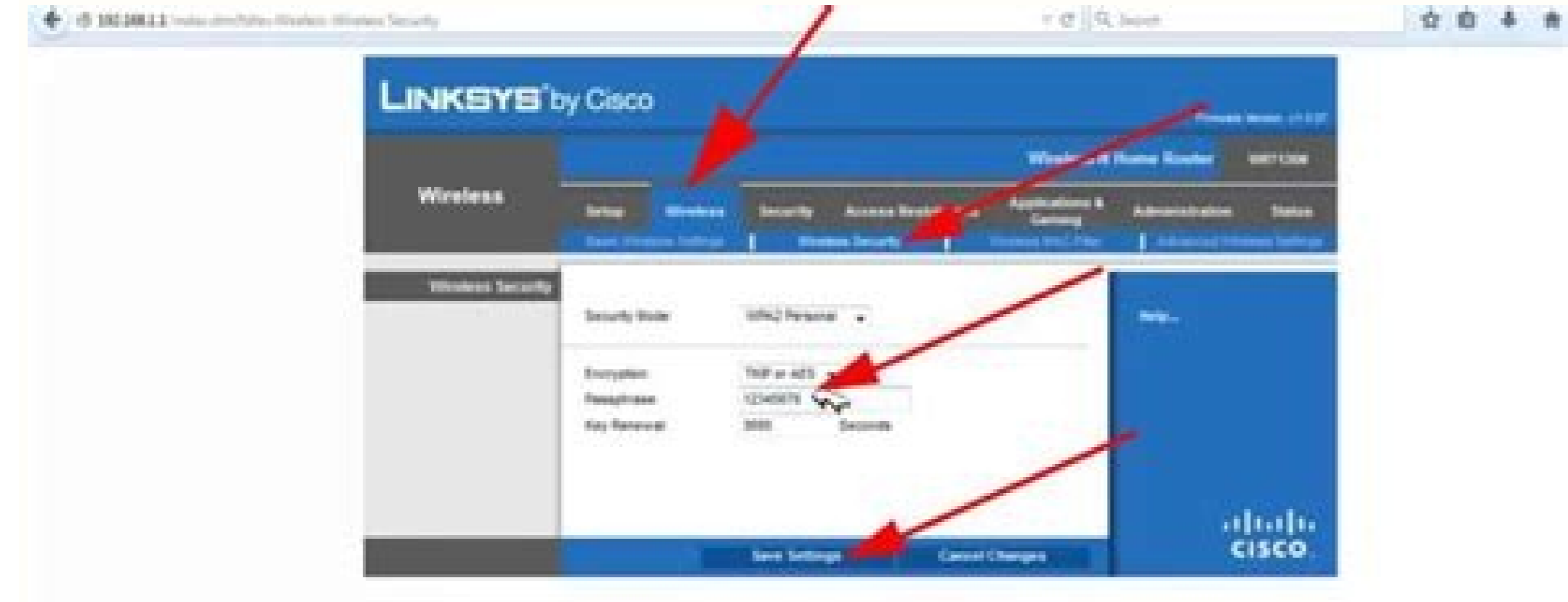
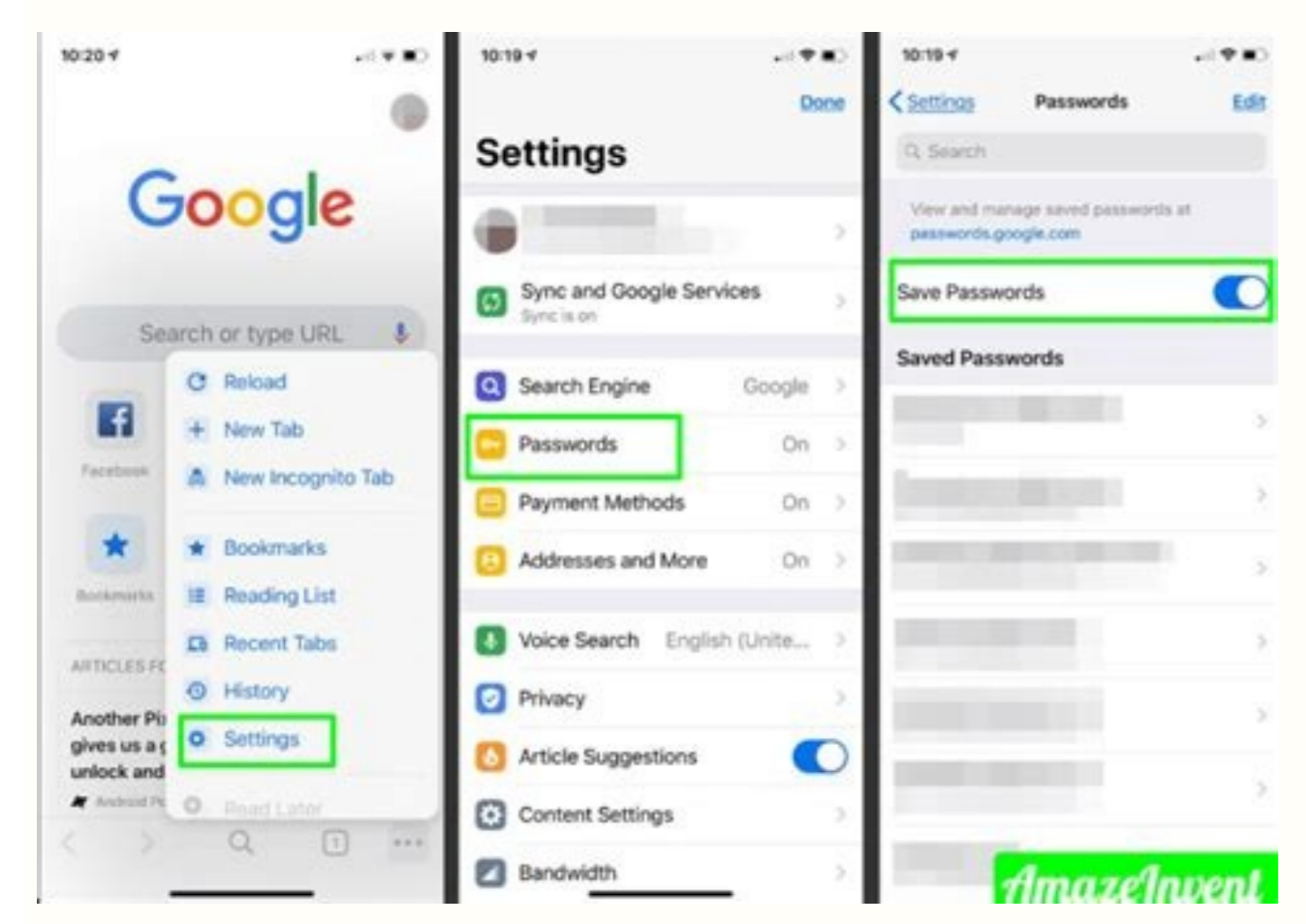
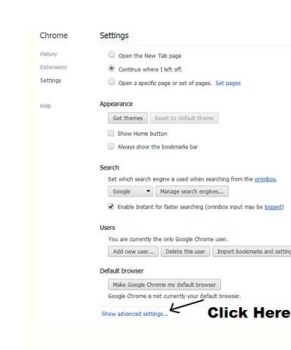


View saved wifi passwords chrome android

Continue





How to view all saved wifi passwords on android. How to view saved passwords chrome android. Can't view saved passwords in chrome android. How can i see my saved wifi password on android.

Something went wrong. Wait a moment and try again. Android indeed offers users more features than any other mobile operating system. But, at the same time, it misses some basic features. For example, Android doesn't allow you to view the saved WiFi networks on your device. Although Google introduced the password viewing option on Android 10, the older versions of Android still lack this useful feature. So, to view the saved WiFi passwords on an older Android version, you either need to use third-party file explorer apps or Android Debug Bridge on a PC. How to View Saved WiFi Passwords In Android (4 Methods) This article will share some of Android's best methods to view Saved WiFi Passwords. With these methods, you can easily recover the lost WiFi Passwords. So, let's check out. 1) See WiFi Passwords without Root Using Android 10, you can see WiFi passwords for all your saved networks without root. You need to implement some of the simple steps shared below. First of all, open Settings. On the Settings, tap on the WiFi network. Now select the WiFi network whose password you want to view and tap on the share button. You need to confirm your Face/Fingerprint or enter the PIN code. You will now see your network's WiFi Password listed below a QR code. That's it! You are done. This is how you can find passwords of your saved network without root. 2) Using File Managers First, you must use a file explorer to access the root folder. For that, you probably need to root your device. However, if you don't want to root your device, you must install File Managers like Root Explorer or Super Manager to view saved passwords. Here's what you need to do. 1. Open the File Explorer that can access the root folder. Next, head to the data/misc/WiFi folder. 2. Under the given path, you will find a file named wpa\_supplicant.conf. 3. Open the file and make sure to open the file in a built-in text/HTML viewer for the task. On the file, you need to look at the SSID and PSK. The SSID is the WiFi name, and PSK is the password. Now note down the network name and its password. This way, you can view all saved WiFi passwords on the Android device. Note: Please do not edit anything in wpa\_supplicant.conf, or you will have connectivity issues. 3) Using WiFi Password Recovery (Root) WiFi Password Recovery is a free tool that requires root access to recover saved passwords on your Android device. You can use this tool to backup all your WiFi passwords on your device. 1. You need to download & install the WiFi Password Recovery app on your rooted Android smartphone. 2. After you install it, you need to grant the Root Permissions. 3. Now, you can see all your saved WiFi passwords listed with SSID Name and Pass. If you want to copy the password, tap on this network and select "Copy password to clipboard." That's it; you are done! This is the easiest way to know saved WiFi passwords in your Android device. 4) Using ADB Android Debug Bridge (ADB) is just like CMD for Windows. ADB is a versatile tool that allows users to manage the state of an emulator instance or Android-powered device. Through ADB, you can execute commands through the computer to your Android device to perform sets of tasks. Here's how you can use ADB commands to view saved WiFi passwords on Android. 1. First, download the Android SDK Package on your Windows computer and install it. 2. Next, enable the USB Debugging on your Android device and connect it with the computer via a USB Cable. 3. Next, head to the folder where you have installed Android SDK Platform Tools. Now on your computer, download & install ADB drivers from adbdriver.com 4. Now, on the same folder, hold the Shift key and right-click inside the folder. Click on the 'Open Command Windows Here' 5. To check whether the ADB is working or not, enter the 'adb devices' command. It will list the connected device. 6. Next, enter 'adb pull /data/misc/wifi/wpa\_supplicant.conf c:/wpa\_supplicant.conf' and press Enter. That's it; you are done! Now you will find the wpa\_supplicant.conf file in the Platform-tools folder. You can open the file in Notepad to view all saved SSID and passwords. So, that's all from us for today! With these four methods, one can easily view all saved WiFi passwords on an Android. I hope this article helped you! Please share it with your friends also. If you have any doubts about this, let us know in the comment box below. Navigate to System->etc->WiFi and open wpa\_supplicant.conf file. If the file manager app asks you how to open the selected configuration file, select the built-in HTML or the text file viewer. Once you open the file, you will be able to view all the passwords of the connected WiFi networks using your Android phone. Toutefois, Where are passwords stored on Samsung? How to see passwords on a Samsung Galaxy S10 Start the Google Chrome app on your Galaxy S10. Tap the three dots at the top-right of the screen. This opens the browser's menu. Tap < Settings. > On the Settings page, tap < Passwords. > You should now see a list of all your passwords. Par contre How can I see my mobile WiFi password? How to Check WiFi Password on Android Mobile Phones Go to the Settings app and head towards Wi-Fi. You will see all the saved WiFi networks. There you will see an option of QR Code or Tap to Share Password. You can take a screenshot of the QR Code. Open the QR scanner app and scan the generated QR Code. Does Samsung have a password manager? Samsung Pass is a cool software by Samsung that uses your biometric data to log in to a site or app on your mobile device. (Similar to Samsung Flow on other Android devices.) It's not exactly a password manager, but a faster and safer way to login to sites or add payment details without typing a word. What is WiFi password? WPA Key or Security Key: This is the password to connect your wireless network. It's also called a Wi-Fi Security Key, a WEP Key, or a WPA/WPA2 Passphrase. This is another name for the password on your modem or router. How can I see my WiFi password on Android 11? Find Wi-Fi Passwords in Android Settings Tap Network and Internet. Select Wi-Fi. Scroll down and find Saved networks. Select the Wi-Fi you want to see the password. Authenticate yourself, then tap Share. The Wi-Fi password will be below the QR code. Can you save passwords on Samsung? Save passwords to your Google Account To save your password for the site or app, select Save. If you have more than one Google Account signed in to your Android device, you can choose the account where you want to save the password. You can manage your saved passwords any time at passwords.google.com or in Chrome. Does Android have a built-in password manager? Do Android Devices Have a Built-In Password Manager? Yes, you can use Google's Smart Lock with all of your Android devices and the Chrome browser. How do I get Samsung to save passwords? You can manage your saved data (passwords, login info, website and apps using Samsung Pass, auto-fill info) by going to Settings > Biometrics and security > Samsung Pass and then selecting either Autofill forms or Sign-in from the two tabs at the bottom of the screen. Where can I find my WiFi username and password? There are two ways to find your network name and password for Android devices, tap the menu icon in the upper-left corner of the screen, then tap Internet. Tap the Wireless Gateway. Select < Show WiFi Settings. > How do I find my WPA2 password? The most common way to locate your Wi-Fi router's security settings, which includes the WPA2 password, is by signing into your router's settings page in a web browser. If the router's manufacturer offers a mobile app, you might be able to see the WPA2 settings there as well. What are the 5 most common passwords? The top 10 most common passwords worldwide: qwerty, password, 12345, qwerty123, 1q2w3e, 12345678, 111111, 1234567890. What app can show WiFi password? WiFi Password Show is an app that displays all the passwords for all the WiFi networks you've ever connected to. You do need to have root privileges on your Android smartphone to use it, though. It's important to understand that this app is NOT for hacking WiFi networks or anything like that. Where are WiFi passwords stored Windows 10? In Network and Sharing Center, next to Connections, select your Wi-Fi network name. In Wi-Fi Status, select Wireless Properties. In Wireless Network Properties, select the Security tab, then select the Show characters check box. Your Wi-Fi network password is displayed in the Network security key box. How do I find my passwords on my Samsung pass? On the Settings page, tap < Passwords. > You should now see a list of all your passwords. Yes, we can see the saved passwords in the Samsung web browser on android phones. To see a password, you'll need to enter your phone's passcode. Then you can view, copy, or delete the password. What is my Samsung password? Use a phone or a computer to navigate to the account retrieval page on the Samsung website. Select the Reset password tab, and enter your email or phone number associated with your Samsung account. Then, select NEXT. An email will be sent to your inbox; follow the instructions in the email to reset your password. Is it safe to keep passwords on your phone? Although it might be tempting and convenient, you should never save passwords on your phone, tablet, or computer. This includes saving them in notes, documents, and even autofill. Generally, saving passwords on your devices can create easy access to your accounts if your device were to be stolen or lost. What's the best Android Password Manager? If you're looking for a trusted password manager app to keep your login information private and secure, 1Password is the best password manager for the task, letting you access your accounts and services with one master password. It's available for all major device platforms. What is a good password manager app for Android? The best password manager apps for Android 1Password, aWallet, BitWarden, Dashlane, Enpass. How do I find my Samsung Pass password? There is a way to view or edit the passwords that the Samsung Internet app uses. Go to Settings > Lock Screen and Security > Samsung Pass (under Fingerprints). You then verify your identity using a registered fingerprint. Can you sync passwords across devices? You can sign in to apps and sites on different devices using passwords saved to your Google Account when you either: Turn on sync in Chrome on Android. How do I access my Samsung pass? How do I access Samsung pass? Samsung Pass is located in the Settings menu. From Settings, tap Biometrics and security and then select Samsung Pass. How do I find my router username and password without resetting it? You Can Look at The Sticker On The Back Of Your Router It is the easiest way to find the router username and password without resetting. You can look at the sticker on the back of the router with all the information you need to access the router's web user interface. How do I find my SSID on my Android phone? Android From the Apps menu, select < Settings >. Select < Wi-Fi >. Within the list of networks, look for the network name listed next to < Connected >. This is your network's SSID. Contributors: 24Si vous avez d'autres remarques, écrivez-nous dans la section des commentaires et n'oubliez pas de partager l'article !

